

The LYDDEN



Issue 559 July 2021



News / Features / What's On / Community Information

For the Parish of
LYDDINGTON and WANBOROUGH

In the United Benefice of Lyddington, Wanborough, Bishopstone and Hinton Parva



The beauty of wood without the hassle

This traditional timber look window range, manufactured from low maintenance PVCu, has a grained wood effect finish. Available in a wide range of colours, a combination of classic styling and modern materials makes it ideal for timber replacement in a conservation area.

- Reduce energy bills
- Six point high security locking
- Reduce condensation
 - No painting
- Double or triple glazed
- 10 year insurance backed guarantee

Also available, composite doors with the look and strength of timber doors but with no maintenance. Top security claw locking systems fitted as standard.

For all your double glazing windows, doors and patio doors telephone us now for a free no obligation quote from a trusted company with over 20 years trading.



DA Windows and Doors
High St | Warrington
01793 790754



Windows & Doors



Nationwide
PROPERTY LETTINGS

One of the longest established letting agents in the county who bring you experience with a modern approach & unrivalled property expertise and marketing knowledge.

Call Gary Sumner on 01793 513130



www.nationwidepropertylettings.com

Sell your Home

for just

1%



+ VAT

Contact us today on 01793 641 641
to arrange a free valuation!

PRIMARY
Tel: 01793 641 641

**HOMES
& LETTINGS**



Your local family run business

Dear Friends,

During the past few months many people have asked ‘when will we get a new Vicar?’ Each time I have replied that there is work to be done before the process of appointing someone new begins to take place. I also believe that the preparation for that process to begin will take about a year.



I can almost hear the cry ‘Why?’ and I will try to explain the reasoning to you. Firstly, it has been a difficult time for the churches and our communities with the closure of our Churches due to the pandemic, the uncertainty of when we can get back to a new kind of normal, and the suspension of our previous Vicar.

Phil and I were appointed by the Archdeacon to step in and provide for the worship and pastoral care of the parishioners. We have been asked to help the four parishes of our Benefice to work more closely together, sharing resources where possible, and plan for the future. All of which takes time.

Those elected to our PCCs at the Annual Parochial Meetings in April will meet together as a Benefice Forum. This will give us time to really get to know one another and the issues each church and community face – all of which will help us plan for the present and the future.

If you have any comments, thoughts or issues you would like us to explore then please do get in touch. We are there for the Church and the communities we serve.

As a Church – in Liddington, Wanborough, Bishopstone & Hinton Parva - we are there for you and it is a great privilege to welcome you into them. It is also a great privilege to be set in the midst of our communities as a sign of God’s presence with us. A permanent reminder that God is there to share in our happy and sad occasions, the difficult and challenging times, each and every day. ‘Thank You God!’

With love and prayers

Sandy

Revd Sandy Railton: 01793 814162/07867 525641

Email: sandyrailton@icloud.com

Revd Phil Ashby: 01793 978528/07807789649

Email: revphilashby@gmail.com



Church Services July 2021

Benefice of Lyddington and Wanborough and Bishopstone with Hinton Parva

Sunday 4th July 10.30am service at St Mary's Bishopstone

Sunday 11th July 10.30am service at St Andrew's Wanborough

Sunday 18th July 10.30am Service at St Swinthun's Hinton Parva

Sunday 25th July 10.30am Service at All Saints' Liddington

Sunday 1st August 10.30am Service at St Mary's Bishopstone

Bishopstone and Hinton Parva WI

Sun and fun and we only had to go as far as Hinton Parva! What a special occasion, the first time for many months when we were all able to meet together. The sun shone on us as we shared a delicious afternoon tea and an "alternative" flower, craft and produce competition. We were fortunate to enjoy this occasion in a beautiful garden courtesy of Hazel and Peter Cook. We extend our thanks to them.

We look forward to our July meeting which will be a guided walk around Brampton, led by Stewart Smith who will share the history of this lovely village with us.

Recently we have been pleased to welcome new members to our WI and should anyone else wish to join us please contact Judith Evans on 790432.



Coffee Morning

Coffee mornings are held on a weekly basis at The Brewers pub starting at 10.30am. Everyone is welcome to attend, no need to book just turn and we look forward to seeing you there.

Many thanks to Paul and Amy at the Brewers for hosting us.



The next Wanborough Farmers' Market will be held on Saturday 17th July, 9am to midday, Wanborough Village Hall SN4 0AD. Parking is available at the Harrow Inn. Face coverings will still be mandatory. There is likely to be no market in August if the village show goes ahead – some of our traders can be found there. As always, check www.wanborough.info or contact Sue or David Birley on 01793 790438 sbirley@gn.apc.org

Nature Rambles

Musings on the words of Swindon's Victorian nature writer, Richard Jefferies, by Dr Mike Pringle, Director of the Richard Jefferies Museum. For more information: www.richardjefferies.org

Richard Jefferies was a Victorian nature writer. He was born in 1848 at Coate, which was then just a tiny hamlet adjoining the boundaries of Wanborough and Liddington, surrounded by fields and woodland rather than the Great Western Hospital and Badbury Park estate.

Just as much of it still is – at the moment at least – the area then was covered with farms and farmland, and the Jefferies' family home was a small farmstead set in fields bordering Coate Water and on the other side of what is now the Marlborough Road. Although the farm had a small herd of cows, Jefferies' father was not a natural farmer, and the family relied on small amounts of money from selling lavender, and homegrown fruit and vegetables, to survive. Jefferies himself also grew up without the farming gene, and chose instead a career in writing, starting off in local journalism with encouragement from the editor of the Swindon Advertiser. However, much of his professional writing did end up being about agriculture, and his early years living within the farming community and exploring the local countryside gave him a sharp, unique perspective on life on the land at that time.

The following excerpt is from Jefferies 1879 book *The Amateur Poacher*, and gives a glimpse into a North Wiltshire farmyard in July in Jefferies' day.

"In July such a rickyard is very hot; heat radiates from every straw. The ground itself is dry and hard, each crevice choked with particles of white chaff; so that even the couch can hardly grow except close under the low hedge where the pink flower of the pimpernel opens to the sky. White stone staddles – short conical pillars with broad capitals – stand awaiting the load of sheaves that will shortly press on them. Every now and then a rustling in the heaps of straw indicates the presence of mice. From straw and stone and bare earth heat seems to rise up. The glare of the sunlight pours from above. The black pitched wooden walls of the barn and sheds prevent the circulation of air. There are no trees for shadow – nothing but a few elder bushes, which are crowded at intervals of a few minutes with sparrows rushing with a whirr of wings up from the standing corn.

But the high pitched roof of the barn and of the lesser sheds has a beauty of its own – the minute vegetation that has covered the tiles having changed the original dull red to an orange hue. From ridge to eaves, from end to end, it is a wide expanse of colour, only varying so much in shade as to save it from monotony. It stands out glowing, distinct against the deep blue of the sky. The 'cheep' of fledgeling sparrows comes from the crevices above; but swallows do not frequent solitary buildings so much as those by dwelling-houses, being especially fond of cattle-sheds where cows are milked."

Photograph: Stable building with hayloft on the Jefferies' farm, by Elmar Rubio.





Wanborough Parish Council

The Annual Parish Assembly was held on Monday 24th May at Wanborough Village Hall, Cllr Bob Biggs, Cllr Dave Hayward, Cllr John Emmins and Cllr Mike Webster gave an excellent presentation to all present on what has been achieved over the past year, providing an update on all areas that the Parish Council are responsible for, along with an update on the Hooper's Field Expansion Project, plus a financial report.

For those who were unable to attend the meeting a copy of the presentation is now available to view on the Parish website for www.wanborough.info. If you would prefer to receive a hard copy then please contact the Parish Clerk and this can be arranged.

Footpaths

We are continuing with the inspection and improvement of our village rural footpaths, we have recently cleared the shrubbery along footpath WA23, the section from Honeyfield Farm towards Wanborough Road. Once all the shrubbery had been cleared we were then able to repair the stile and bridge. Great job by all those involved and hopefully making this footpath more accessible.

Our Handyman is continuing to focus on keeping all the footpaths within the centre of the village maintained including strimming shrubbery back along the pavement next to the footpath from Horpit crossroads up the side of the High Street.

We carry out our own checks around the village to identify any maintenance that needs doing. However if there is anything that you feel needs urgent attention around the village, then please report any maintenance issues to the Parish Clerk by either e-mail clerk@wanborough.info, by using the "Maintenance Report" on the Parish website www.wanborough.info, or alternatively text, ring or WhatsApp on telephone number 07588 769829. Please do not use Facebook to report maintenance issues as the Parish Clerk cannot keep track of these.



Rodway Open Space - Footpath entrance sculpture

Footpaths & Village Maintenance Committee are currently looking into options for the replacement of the wooden sculpture that was removed by Swindon Borough Council. The original wooden sculpture known as the "Giraffe" was designed by Walter Jack. Walter Jack is unable to provide us with a replacement but he has given permission for us to send a photo of his work to another artist to copy. We would therefore be interested to hear from residents to confirm:-

- Would you like to see an identical or very similar sculpture replaced at the footpath entrance to Rodway?
- Would you like to see something completely different? If so do you have any ideas as to what you think could be installed instead.

At the moment we are open to ideas and preferences but obviously we want to install something new that the village will be proud of.

If you have any ideas as to what you would like to see or just want to provide feedback please contact Cllr Kathy Glanville (cllrglanville@wanborough.info) or the Parish Clerk (Clerk@wanborough.info). We look forward to hearing from you.



Hooper's Field Pond Restoration

Cllr Mike Webster, Cllr Dave Hayward and Parish Clerk had a very successful meeting with Wiltshire Wildlife Trust to discuss the restoration of the pond at Hooper's Field.

At the meeting representatives from Wiltshire Wildlife Trust confirmed that the pond meets their criteria to receive full funding under the Natural England District Level Licensing Scheme to restore the pond with a special interest in Great Crested Newts. In addition they can provide a management plan to keep the pond maintained going forward.



This is extremely good news for the village and with thanks to Cllr Mike Webster who has used previous experience and contacts to help us gain this funding. The pond as you will all have seen, is currently very overgrown, with a considerable amount of silt and sediment built up. It will be lovely to see the pond restored and maintained to a better standard and become an area that will attract local wildlife and a place residents will enjoy visiting.

There are a few minor points that we need to discuss at the next meeting with Wiltshire Wildlife Trust, including what we can do about the large storage crate at the back of the field, ensuring the sports pitches are not affected (the aim is to keep the area within the current tree and shrub boundary) and looking at how we can prevent footballs ending up in the pond.

In addition to this funded project, we also asked the representatives from Wiltshire Wildlife Trust to look at the small pond opposite the school (The Beanlands). This pond is also in poor condition and although it doesn't meet their criteria for funding they have confirmed that they will provide a quote to restore this pond at the same time which will hopefully reduce the cost. Once Parish Council have received this quote they will discuss whether they would like this pond to be included within the restoration plan.



Community Footpath Walks

We have been asked by residents as to whether we can hold our monthly community walks again, as they had been put on hold due to the pandemic. With the change in government guidance we are pleased to confirm that we can now hold the following three walks but I'm afraid we will not be able to offer refreshments at the end of the walk. Please instead bring your own refreshments or perhaps weather permitting we might be able to visit one of the pub gardens.

Walk 1 - Wednesday 7th July - meet outside Wanborough Village Hall at 1pm - We plan to walk around the fields behind the High Street - A leisurely walk approximately 3 miles with a few stiles.

Walk 2 - Thursday 5th August - meet at the Church car park at 1pm - We plan to walk to Liddington, down to Lower Wanborough - A leisurely walk approximately 3 to 4 miles with a few stiles

Walk 3 - Friday 3rd September - meet outside the Calley Arms at 1pm - We plan a slightly longer walk up The Hollow and out towards The Combes in Hinton Parva - approximately 5 miles with a few stiles.

We look forward to seeing you all there.

Village Clean up

A big thank you to everyone who came out to help on any of the three days of litter picking, it was great to see you all. Over the three days we managed to cover the whole Parish which is a great achievement, quite a bit of litter collected but probably not as much as usual as the grass was quite high making it difficult to see all the rubbish.

We will organise further dates in the future so please keep a look out for further updates.



Allotment Competition

Once again we will be holding the Annual Allotment Competition. The first round of the competition is due to be held on 25th June at 5pm and the second round on 30th July at 3pm.

There are two prizes, one for the "Best New Allotment" which is for those who have recently taken on an allotment in the last two years and the "Best Kept Allotment" for those who have had their allotment for longer.

As always the standard of the allotments at Wanborough is very high and having walked around and looked at them myself the judge will certainly have a difficult job choosing.

We wish all the allotment holders good luck and look forward to seeing all the pictures of their produce.



Village Handyman Vacancy

As mentioned in last month's Lyden the Handyman has confirmed that he will be leaving us soon due to moving house. If anyone is interested in this position please contact the Parish Clerk who will be able to provide you with a copy of the job description and terms of employment. The position is part-time with flexible working hours to fit in with either your current job or ideal for anyone looking for part-time work. The job involves a considerable amount of work using petrol powered tools such as strimmers & hedge cutters so you will need to confirm that you will be able to use this type of equipment.

Lower Recreation Play Area

We are pleased that the refurbishment of the play area at the Lower Recreation Field is now complete. A gallery of the play area can be seen in the centre pages of the magazine.

Planning

Inlands Farm Planning Appeal

At the time of writing the Inlands Farm Planning Appeal has just commenced. The appeal process is due to last 3 weeks and by the time you receive this magazine it will be coming to the end of the 3 weeks. However the Highways considerations and discussion is scheduled to be carried out in a 4th week that is likely to be sometime in September so it will be some time until we find out the Inspector's decision. Details about the Appeal can be found on our website and we will try and update this on a regular basis

Next Meeting

The next Parish Council meeting is due to be held on Monday 26th July 2021 at Wanborough Village Hall starting at 7.30pm. All residents are welcome to attend. However depending on the current Government Guidance there may be a limit on the number of people we can have at the Village Hall at any one time, so if you wish to attend then please let the Parish Clerk know by e-mail clerk@wanborough.info.

Angela Raymond, Clerk to Wanborough Parish Council

Crime prevention

The National Fraud Investigation Bureau (NFIB) produces monthly threat assessments outlining trends in fraud reporting and emerging frauds that are anticipated over the coming weeks. Here is a summary of the types of fraud where reporting has increased recently, as well as what to look out for in the coming weeks.

Increases in reporting have been seen in:

- Online shopping fraud
- Door to door sales fraud
- Phone fraud
- Investment fraud
- Rental fraud
- Computer viruses and malware
- Mandate fraud (where fraudsters obtain details of direct debits, standing orders or account transfer details and amend them to transfer money to other accounts)
- Delivery company-branded smishing, with messages asking customers to click a link to either reschedule or pay for an underpaid delivery charge
- Phishing scams involving text messages purporting to be from a bank stating that a new payee or new device has been added



Stay ahead of the fraudsters - emerging issues to look out for:

- Festival/concert ticketing fraud - Fraudsters are expected to try and take advantage of the demand for tickets to the festivals and concerts that have now been announced.
- Holiday fraud - Following the government's announcement that some international travel can resume, fraudsters may look to take advantage of Covid testing for holidaymakers by purporting to offer reasonably priced tests to holidaymakers
- Post-vaccine survey scams - People are being contacted via email and/or text message after receiving the COVID19 vaccine to participate in a fraudulent post-vaccine survey with the promise of a prize or cash at the end. Their credit card information is requested, and they are charged for the shipping and handling fees, but never receive the promised prize.
- End of furlough schemes - It is highly likely that following the end of the furlough scheme in September there will be an increase in demand for short term loans. Fraudsters are likely to try and exploit this demand leading to a potential increase in cold calls from companies purporting to offer various loans to individuals struggling financially
- Advance fee fraud - This is when fraudsters target victims to make advance or upfront payments for goods, services and/or financial gains that do not materialise. It is likely that career opportunities may be offered for payment of an upfront fee for jobs that do not exist

If you experience any of these or other types of fraud, contact the Action Fraud Team

This notice comes to you from the Neighbourhood Alert newsletter



Liddington Parish Council

SECOND DEFIBRILLATOR

The second Defibrillator has arrived and will be located in the old phone box, where the renovation work has begun. If anyone wishes to give a hand with the renovation work, please contact Cllr David Lomax - Email David@liddington.org

ALLOTMENTS

The parish council have been working hard on the clearing and levelling of the allotments for future plot holders. In the last year, the allotments have gone through a major tidy up. Communal fruit trees have all been pruned, hedges maintained, and masses of brambles cut down to reveal other plots. Any plots that are not taken up, will be turned in to a wildflower meadow for the bees and wildlife. We are looking forward to building a community of people here, who can share plants, seeds and swap any surplus vegetables.



Quarter and half plots are available. Please contact the clerk Laura Evans at parishclerk@liddington.org to register your interest. We are more than happy to arrange viewings and either Cllr Lomax, Cllr Hyatt or Cllr Hill will be more than happy to show you around. We look forward to welcoming new gardeners!

Liddington allotments can be found just off Purley Road on the right hand side near the bus stop as you travel towards Commonhead.

ACCESS AREAS

A polite reminder to please keep any access areas that are shared with neighbours free and clean of any debris.

PARISH COUNCILLOR VACANCIES

We currently still have two vacancies on the Parish Council. To qualify you will need to have resided or had your principal place of work in the parish, or within 3 miles of it, during the whole of the 12 months prior to co-option. To find out more, please email the Clerk at parishclerk@liddington.org or alternatively, speak to one of our Councillors.

The next meeting of Liddington Parish Council will be held on 7th July starting at 7pm in the Village Hall, however the social distancing guidelines may still not be lifted sufficiently to enable the Parish Council to extend its usual welcome to all, please contact the Clerk for further advice. Alternatively, if you would like to raise an issue or ask a question, please contact the Clerk, at Parishclerk@liddington.org

Laura Evans, Clerk to Liddington Parish Council

Liddington Village Hall

May Plant Sale

Thanks to everyone who contributed to the Plant Sale, Car Boot and coffee Morning in May. It was great for so many villagers to be able to get together after so long being kept apart. Thanks especially to all those who grew seedlings and plants and donated them to the sale. It has been a difficult year for growing - a very dry April followed by a wet and cold May - so it was a great effort. We intend that it will be an annual event to complement the produce sale in the autumn.



Summer Family Barbecue - Saturday 7th August 6pm

We look forward to seeing lots of you at the Summer Family Barbecue in July. Tickets will be on sale from the beginning of July. The early evening timing is to take advantage of warm July evenings and encourage whole families to come and enjoy good food, good company. If you would like to request tickets please call Matthew on 07976 693747

Matthew Bowman, Chairman

Hi. We are Steve, Barbara & Gemma (Gemma's the one with the not very ladylike pose in the photo!). We moved into The Gables in Medbourne Lane towards the end of September last year and some of you will have met Steve with Gemma whilst out walking your 4 legged friends.

We had hardly settled in when, of course, lockdown arrived and we had to make do with having our lovely new home all to ourselves. However, on Bank Holiday Saturday, 29th May, we held a fundraising event in our Garden – in line with COVID safety rules – and succeeded in raising £705 for Christian Aid. A big thank you to those from the village who supported the event. It



Steve, Barbara & Gemma

was good to share our garden with new friends and old.

We are very much looking forward to becoming more a part of Medbourne, Liddington and Wanborough as restrictions gradually ease and we are allowed to get involved with more village events.



Liddington 100 Club

The winner for May is Monica Dale - congratulations Monica .

Caroline Tams



Your Borough Councillor update - Gary Sumner:

My next Ward Surgery is 9am – 10.30am on 26th June at Wanborough Village Hall. The one after that is 31st July where I will have information on Gigabit Fibre and Wanborough Traffic calming as well as the 'Local Plan Review' final consultation.

Gigabit Fibre: This scheme costing close to £1m is now approved for Wanborough & Liddington (as well as Chiseldon) and over the coming months Openreach will begin to connect a new fibre network in the village. Two roads in Liddington and one in The Marsh weren't included but I have positive news that they are proposed for 'Phase 1' build, subject to sign off by BDUK who are providing the funding.

That was a year of hard work and I'm grateful for the support of many residents who helped with printing, leafleting and 'talking up' what a difference this will make to all of us. Thank you also to Robert Buckland for getting the initial meeting last April.

According to national news items, our homes will all be worth more and our lives easier in terms of working, downloading movies, homework online – the list is endless.

For those who have pledged their 'Gigabit Voucher' you will be contacted by Openreach when your build is complete and you can then choose from a number of providers (Openreach just build the network).

If you haven't already signed up it's not too late. You can visit the Gigabit page on my website for more information and the link to pledge. If you pledge to take a service of at least 30mbps for at least 12 months the Government fund a £1500 voucher to cover the cost (or £3,500 for a business). If you wish to connect after the network is built you will have to pay the cost of connecting to the nearest fibre to your home. Openreach confirm that the old copper network will turn off around 2025 and providers will have to offer alternative connections.

<https://www.ridgewayvillages.co.uk/gigabit-fibre-page/>

Foxhill is a bigger problem as the area is large and the scheme much more expensive, so I will be speaking with residents and the Parish Council to get support for a way ahead.

Wanborough Traffic Calming: I had the fantastic news that both phases of the Wanborough scheme in the High Street are now fully funded and will be delivered together. This also includes automated safety signs at Pack Hill to warn of approaching vehicles and a safer crossing in Rotten Row. The High Street scheme adds six parking spaces overall and strategically narrows the road in places and has additional 'build outs' to slow traffic. I am meeting residents with officers who have had small local concerns about access etc and I will have the plans at my Ward Surgery. The next steps and finalising the scheme design and a traffic regulation order will be published for comment.

Wanborough Road: A traffic regulation order will be published to slow this road to 30mph to coincide with the new junctions into the Redlands development and the Southern Connector Road signalised junction.

White Hart Junction: Sincere apologies for the delays, but we have discovered that the sub-surface of the existing roundabout requires replacement (during the build they have planed off some of the surface to reveal structural defects). Rather than finish the scheme and need to dig up again, the whole roundabout carriageway will be re-constructed. The cost is covered by the contingency and the additional time well worth it if it means it is good for 40 years. Carriageway completion Autumn 2021 and the new northbound 'on ramp' to the A419 will be Spring 2022 due to the limited time we get to take possession over the railway line.

Finally, I was honoured to be elected as Deputy Leader at Swindon Borough Council following the recent elections. I continue to work very hard for you as your Ward Councillor and retained my Cabinet role for Strategic Infrastructure, Transport and Planning.

Please call me on 01793 790814 or email me:

gary@ridgewayvillages.co.uk

Ridgeway Ward website: **www.ridgewayvillages.co.uk**

Winifred Spooner 1900 - 1933

Names such as Amy Johnson and Amelia Earhart are familiar as female pioneers of early 20th century aviation....but what of Winifred Spooner, a local girl who literally reached for the sky and was to be acclaimed the greatest aviatrix in this or any other country.

Winifred Spooner 1900 - 1933 Cont'd

Winifred grew up and lived in Hinton Parva at the turn of the last century. Learning to fly in her late 20's she was the 17th woman to gain her pilots licence in 1926.

A year later, she obtained a commercial pilots licence, the first woman in the country to do so.

She immediately bought an aircraft, a De Havilland Cirrus Moth, built a hanger at her brothers' farm in Wokingham and commenced an air taxi service charging £4 per hour or a shilling a mile. She was earning her living flying fare paying passengers around the country, Europe and even as far as Turkey and the Middle East. Winifred had become the first female commercial pilot in the United Kingdom.

Recognised as a highly accomplished pilot and navigator Winifred was a celebrity of her day.

In 1928, only two years after learning to fly she was the first woman aviator to participate in the prestigious Kings Cup Air Race around Britain. Finishing a credible third, she won the Siddeley Trophy as the first club aviator to cross the line.

Over the next two years Winifred competed in air races across Europe and even flew for the Italian national aeronautic team. Her trophy cabinet was bulging and included the 1929 Harman Trophy for being the world's outstanding aviatrix; winner of the Trophy of the International League of Aviators; holder of the Imperial Tobacco Trophy; first in the Round Europe Contest as well as cups and medals from countless national and international flying challenges and races.

Winifred was justly acclaimed as 'The best woman flyer in the world'. She also flew in trans-continental air races in America having first obtained her United States Aviator Certificate. As it happened this was signed by Orville Wright, the man together with his brother Wilbur, who was credited with completing the first sustained and controlled powered flight that lasted just 12 seconds, covered a distance of only 200 feet and reached a dizzying speed of 6.8 mph.

Not content with air races, Winifred sought a greater challenge. In 1931 she embarked from Croydon Aerodrome with the objective of proving the southern tip of Africa, Cape Town, could be reached in just five days and nights of flying. Sixteen hours into the flight, whilst Winifred slept and with her co-pilot in control, the plane unaccountably lost height and crashed into the sea off Italy. Winifred rescued her co-pilot from the submerged cockpit and then swam over two miles to the shore to raise the alarm. She reached the coast exhausted, in a state of near collapse. However, at dawn in a fishing boat she rowed back to the wreckage of her stricken aircraft, which was fortunately still afloat, to the relief of her co-pilot, who being unable to swim was sitting astride the planes' fuselage, weakly calling for help.

On return to England Winifred was hailed a hero and was celebrated across the country.

Winifred led an adrenalin fueled life filled with excitement and danger. It is therefore ironic she died not in a dramatic flying accident or disappeared whilst completing a solo, long distance flight but simply due to complications resulting from nothing more than a common cold.

Influenza developed and confined to bed, her condition rapidly grew worse. Diagnosed with pneumonia a doctor summoned for oxygen but the driver delivering the cylinder became lost in a January fog and sadly Winifred succumbed. As a last roll of the dice the doctor administered an injection of strychnine (now recognised as a poison) but then frequently used as a heart stimulant. He was unsuccessful and Winifred did not respond.

Winifred died in 1933, aged just 32. Attendees at her funeral at St Swithun's included politicians, military representatives from the UK and Italy in full dress uniform, aviators from across the UK and Europe.

Today, as post pandemic planes return to the skies leaving their vapour trails in the skies over Hinton Parva I very much doubt if their pilots have knowledge of Winifred lying below. No doubt some of the pilots are women and nearly 100 years since local girl Winifred became the country's first woman commercial pilot, this presents an added poignancy. The above is a very much abridged account of a Hinton Parva woman's short but quite extraordinary life story that I'm continuing to research and which is revealing a fascinating insight into her remarkable achievements.

Nigel Henham, Rose Cottage, Chapel Lane, Wanborough SN4 0AJ (nigelhenham@gmail.com)

Berkeley Farm Dairy

Berkeley farm Dairy is now delivering organic dairy products and other locally produced groceries direct to doorsteps in Liddington, Wanborough and Hinton parva on Tuesday and Thursday mornings.

Berkeley farm Dairy is run by the Gosling family. The Gosling family started delivering milk to the doorsteps of people in Wroughton and Swindon in 1918. The milk rounds grew and survived two more generations of Goslings before eventually being stopped in 2003. My father stopped the milk rounds due to a huge loss of customers caused by the emergence of cheap supermarket milk in plastic bottles.

Consumers attitudes towards single use plastics has changed in recent years and there is now a growing demand for milk in reusable glass bottles. This, and a sense of carrying on family tradition, has made me decide to resurrect the milk rounds.

The name of our milk delivery service is '10 Green Bottles'. It is a 21st Century approach to doorstep milk delivery but still keeps some traditional elements.

The mission of 10 Green Bottles is to minimise waste, have a low environmental impact and support local producers. We have three rules:

1. All our products must be packaged in either:
 - bottles or jars that are collected by us, washed and reused
 - compostable packaging
2. All of our products must be made by us or sourced from businesses within a 50 mile radius of our depot in Wroughton.
3. All of our delivery vehicles must be electric and charged by renewable energy. Also 10% of our profits are given to 'Plant Your Future' which is a tree planting charity.

Our dairy products include organic milk, cream, butter, yogurt and flavoured milk. These are all made using milk from our own herd of organic Guernsey cows in Wroughton and also from Ken and Steve Goughs organic British Friesians at Ogbourne.

Other products include:

Orange Juice (Berkeley Farm, Wroughton)

Cheese, yoghurt (Brinkworth Dairy, Wooton Bassett)

Eggs (Jones' Country Fayre, Wroughton)

Cereals (Swindon Pulse, Pertwood Organic Farm, Salisbury)

Bread (Halls bakery, Stroud)

Apple Juice (My Apple Juice, Hungerford)

Crisps (Two farmers, Hereford)

Honey (Wiltshire Bee Centre)

Preserves (Little Bag of Herbs, Wroughton)

Rape Seed Oil (Gears' Oil, Hungerford)

Ice cream (Rays, Swindon)

Household cleaning and hairwash (Wroughton Refills)

Ordering is very easy. If you have a smart phone or tablet, just download the 10 Green Bottles App from the App Store or Google Play store and put in your name, address and direct debit details and then start ordering. If you do not have a smart phone you can use our answerphone service by calling 01793 688834. All payments are taken by direct debit at the end of each month.

For more information visit www.10green.co.uk



A fond farewell to Wanborough Playgroup

Many of you will be saddened to learn of the permanent closure of the village playgroup and preschool at the end of July.

After 45 years it is time to say good bye and thank all the staff for their dedication and hard work to make this the setting that it was for so long. Committees past and present for the giving up their time for meetings and fundraising efforts. And of course, all the families for sending their wonderful children along to share the fun.

**Although our time has finished
Our smiles will never fade
We won't forget
The handprints left and memories that were made**



Lower Recreation Field

New Play Area





Borage



Red Clover



Lords & Ladies

The Great Wanborough Wildflower Hunt

All of these wild flowers have been found around Wanborough and are listed in our wildflower database on the parish website www.Wanborough.Info. When out and about this month, keep your eyes open for these wildflowers and many more then post your pictures on the Wanborough Community Facebook Page.

Can you answer these questions?

Which is our protected plant?

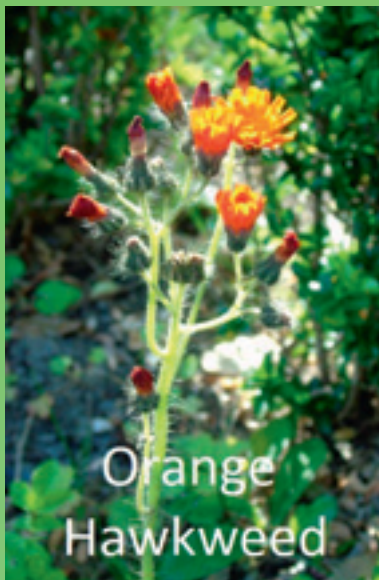
What other colours can Hawkweed be?

How many leaves does a four leaved clover have?

Which of these flowers is a culinary herb?

What is another name for the flower "Jack by the Hedge"?

What colour berries does the plant "Lords and Ladies"?



Orange Hawkweed



Jack by the Hedge



Tufted Vetch



Yellow Vetchling



Ragged Robin



First coffee morning June 2021 !

Wonderful turnout for our coffee morning , 30 people came along and enjoyed coffee and lovely cake in the garden , wonderful ! So much chat !

Join us next time , every Thursday 10.30 to noon , thank you Amy and Paul at the Brewers

CHIROPRACTOR

Stephen Goodman

Gentle Chiropractic manipulation and soft tissue therapy
for all ages

Back pain
Neck pain
Sciatica
Headaches
Arm / Leg pain
Knee pain
Sport injuries
Muscular pain

T - 07941 036467
E - chirogoodman@gmail.com
30+ years experience
McTimoney technique
GCC Reg No 1201



The Liddington Chiropractic Clinic, Honeyuckle Lodge, Yeomans Way, Liddington,
Swindon, SN4 0HF

COMPLETE BUILDING services

ROOFING & BUILDING



DRY VERGE SYSTEM SUPPLY & FIT

£120

ANY APEX - ANY SIZE

FULLY INSURED

WORK GUARANTEED

FREE SCAFFOLDING



- ROOF REPAIRS • NEW ROOFS • REFELT & BATTON
- FLAT ROOF epdm RUBBER/FIBREGLASS/FELT
- ALL CHIMNEY WORK • REBED RIDGE & HIP TILES
- DRY RIDGE & DRY VERGE SYSTEM
- NEW BUILDS • EXTENSIONS

01793 239742

Info@Completebuilding-services.co.uk www.Completebuilding-services.co.uk
15 Shaftesbury Centre, Swindon SN2 2AZ

TENNIS CLUB UPDATE

The club has some very exciting developments in progress. Our main focus is to open up the club's year-round potential by upgrading our existing floodlights to LED and add new floodlights to courts 3 and 4. This will result in more social play, more coaching, more match play and more junior tennis – so a real bonus for everyone, whether you are a regular member or a Pay and Play person. We now need to raise a whopping £25,000, so we are asking everyone to help by attending and supporting our planned fundraising events:

11 JULY: DOUBLES TOURNAMENT & LUNCHTIME BBQ

Join us for a doubles tournament on Sunday 11th July at 10am to tie in with the Wimbledon men's finals day. It is promising to be a great social event that is open to everyone so please come along even if you are not playing. Bring your families (and chairs), and enjoy the matches followed by the BBQ lunch; don't worry we're aiming to be finished in time for the Wimbledon final! Entry for players is £20 per person; BBQ tickets are £5 per person. Please contact Becky on 07716094225 or beckyprince@live.co.uk. Looking forward to seeing you all there.

16 JULY: CLOTHES & SHOE COLLECTION, THROUGH BAG2SCHOOL

As well as raising vitally needed funds for the floodlights, this is an eco-friendly scheme that helps divert unwanted textiles away from landfill. Just fill a black sack with old clothes and shoes, and bring it down prior to the 16th to the tennis hut when the pavilion is open (Note: bags will be collected at 9am on 16th):

Saturday mornings during coaching 9:30-12:30pm

Sunday Rusty Racquets sessions 2-3pm

Thursday 15th July 2-4pm and 6-7pm

Club sessions – times are available on our website

Don't forget to ask your parents, grandparents, friends and neighbours too! You can contact Wendy Broughton on 07753 106601 if you have a large number of bags that you wish to donate, or if you need to arrange your donation for outside of the above times.

21 AUGUST: WANBOROUGH SHOW STALL

Details to follow.

10 SEPTEMBER: QUIZ NIGHT IN THE VILLAGE HALL

Save the date for a fantastic fun night hosted by Martin Hook. Details to follow.

Social club play is back running at the usual times, so grab your racquets and come on down to the courts for our club evenings. In addition to scheduled coaching, Becky will be running summer camp over the school holidays (weeks commencing 26th July, 9th August and 16th August). Tennis will run 10-3pm, with drop off available from 9.30am. The cost is £18 per camp for members and £20 per day for non-members; please contact Becky directly for further details or to book a camp.

Finally, we have a brilliant new club logo thanks to a local resident who designed it for us; we hope you like it as much as we do! New sportswear with the logo will be available for purchase through the club later on this year; hopefully this will contribute substantially to the floodlights fund.

Happy Tennis-ing over the summer!



PASSING THE TIME

"Jigsaws? JIGSAWS? Really? What, breaking a picture up into bits then putting it all back together again? What on earth's the point of that?"

Well, quite. In fact, years ago, I might have thought that myself, but not any more. Even before lockdown, I had discovered that if you chose your jigsaw carefully and picked paintings by Old Masters or by any painter whose work you were interested in, there was a lot of point.



In a gallery, or in the pages of an art book, you might spend several considered minutes looking at a painting you liked. Tackling a jigsaw of the painting, however, makes you actually involved in the painting, in the details, in the artist's colours, brushstrokes and techniques. You come to know the painting as you look carefully, minutely at what has been done.

One of my earliest challenges was an El Greco painting, because I wanted to learn how an artist gives us colour. The reds and yellows in the jigsaw, with the glorious folds of different kinds of fabric falling and moving, showed me how light and dark can be used. I also learned I liked studying faces.

So, for faces, fabric and movement, I found a Renoir puzzle, *Le Bal Du Moulin de la Galette*. I'd often looked at this painting, but never really studied it until I spent time sorting out the pieces of all those different blues. It's beautiful.

Another interest had been Medieval Tapestries, and I think before you tackle a jigsaw of this type, you should go to the Tapestry Room at the V and A. I once had a magical visit there with my daughter, the whole room empty except for us, so that we were able to get close up to the tapestries, examining stitches and patterns and complexity. The *Lady And The Unicorn* tapestry itself, lives in Paris, but there's a delightful jigsaw where you can imagine you are stitching those flowers and trees.

I wish more jigsaws featured a stained glass window, because there's so much richness of colour. I have a well-worn puzzle with those beautiful stylised early medieval figures staring out at us with their expressionless faces. A friend in Liddington spends a week each summer in France on a practical stained glass course, and makes interesting modern pieces. I just do the jigsaws, but I am pleased with the link and I like to see what has been created.

Many of us are probably familiar with Breughel paintings from Christmas cards, and the paintings lend themselves to sorting out faces and figures and fun. The Children's Games one has apparently been the subject of varying levels of analysis:

"Is the blue of the cloaks the colour of deception or truth? Is it all a satire on human folly?"

Idea to ponder as you search for that elusive arm, or hat, in the pieces spread out on your dining room table.

And then the ultimate challenge: The Sistine Chapel Ceiling.

I've been there. I've been herded around with other tourists in a timed session.. I've had a little lie-down to squint up at the ceiling, and marvelled at it. But when I finally got round to tackling the 1000 piece jigsaw, I just marvelled at it all anew. In comfort. It doesn't REPLACE seeing a painting, but it certainly adds to the experience.

Margaret Drabble, the writer, said she learnt more about the appreciation of clouds and of the painter Constable, from doing jigsaws of *The Haywain* and *Salisbury Cathedral*, than from her first seeing of the original paintings. "The puzzle fixed my attention and made me pause," she said.

I think people who do jigsaw puzzles are sometimes thought of as folk with nothing else to do, no thoughts to think, pointlessly wasting time. That may be. But lockdowns and social restrictions, have probably made us look around for what we might like doing, and look afresh at some splendid ways of passing the time. I recommend jigsaws for all!

Caroline Walker.



Taking the OYNB Challenge

This advice for sober attendees at a stag/hen night amused and inspired me:

"The opposite sex will seek you out. There is something about being sober late on. You're standing upright, your face doesn't look like you're having a stroke and that seems to make you attractive to the opposite sex. Enjoy the attention you legend!"

It's from 'The 28 Day Alcohol Free Challenge' by Andy Ramage and Ruairi Fairbairns of One Year No Beer (OYNB).

During Lockdown 1, I found myself opening the wine bottle earlier every evening. I remember applauding the binmen as they noisily emptied my bin boxes of empty booze bottles. Dr Valerie Voon, author of a Covid study from the University of Cambridge wrote: *"As Covid-19 remains part of daily life, many of us are turning to alcohol to cope with stress. For many people, drinking in moderation can be a help with stress relief, but for others it can be more problematic"*. I felt my Lockdown drinking was tending towards 'problematic'.

In July, I read the OYNB book and considered taking the 'No Alcohol Challenge' for fun. OYNB offers 3 Challenges: 28 days, 90 days or 365 days.

I chose the 90 days and I began on 30th August.

The Challenge progressed without blips or intolerable yearnings. There were several keys to my success:

I continued my social drinking pattern, except the liquid in my glass was alcohol free (AF). I bought a selection of drinks to make 'mocktails' and had fun experimenting with recipes. I sampled the wide range of AF beers. I recommend Adnams Ghost Ship, but all are far superior to the versions I tried several years ago. I tested red and white AF wines... but once only for each: AF wine needs considerably more development! But I recommend my delicious mocktail: Martini Vibrante, Nozeco, ice and orange slices.

OYNB membership includes a private Facebook Group for participants taking the Challenge. The mutual support was helpful. Tips and suggestions are given and accepted. I learned about many taking the Challenge because their alcohol consumption was a major problem.

OYNB recommend making a list of "whys" before starting. These measurable 'whys' became my focus and remain an ongoing part of my journey. My number 1 'why' was a 5kg weight-loss target.

There is a daily video and email 'pep-talk' plus a live Facebook. I found these more helpful in the first few weeks of the challenge.

Day 90 was 27th November. While I had succeeded in remaining AF, I had lost only 2Kgs. This led me to upgrade to 365days Challenge.

As I write, today is my 282th day Alcohol Free. Come 29th August, will I drink alcohol again? I have not decided yet. So far: I have been surprised I regularly wake much earlier; I always feel clear-headed; my mind is buzzing with creative ideas; I feel much more productive; no one has criticised me. So now I feel inclined towards continuing my AF journey!

Cyril Mannion

Recipe of the Month: Cumberland Pie (Oop North England)

This is a variation on Shepherd's or Cottage Pie using the same fillings but covered with sliced spuds and a sort of savoury crumble.

I don't know why it is called a Pie, as it does not involve pastry in any way, but there you go.

As the Food Technician at a secondary School, I once asked, 'What are you cooking today?'. 'Shepherd's Pie, Sir'. And what goes in this Pie?', I asked'.

'Mince Sir', said with enthusiasm'. 'What sort of Mince?'. 'Lidl Mince, Sir'...

So, wherever your Mince comes from, be it Lamb, Beef, Vegetable based, or whatever, bear in mind the logic of this young chef in the making.

Cook a standard mixture of carrot onions, celery, mince (or diced meat), tomato puree, garlic, etc, as you would for your Cottage or Shepherd's Pie. Allow to cool.

Par boil some thinly sliced spuds and layer over the top, add some melted butter if feeling decadent.

Mix equal amounts of good cheddar and breadcrumbs and sprinkle on top.

Cook in a 160 C oven until crisp and bubbly, about 20 minutes.

Nice with a glass of Red Wine, or a good flavoured real ale and some buttered cabbage.

Thought of the month: recipes that say 'preheat the oven' some 2 hours or so before it is needed are wasteful.

Martin Ripley



RICHARD GRIFFITHS
Dovetail Building Ltd

Extensions - Loft Conversions
 Conservatories - Roof Tiling & repairs
 Blockpaving - Patios - Decking
 All types of Carpentry & made to measure Joinery
 Fully fitted Kitchens & Bathrooms
 Hardwood flooring - Ceramic Tiling
 Structural Alterations - Plastering

 dovetail_building 
 REFERENCES AVAILABLE

Iris Cottage Lower Wanborough
Tel: 791581 / 07768 448 666
 Email: richgriffiths@rocketmail.com
 Third Generation Building Company

FF Floors Floored
 Specialists In All Aspects Of Floor Covering
 From Luxurious Carpets To Hardwearing Economy
 Beautiful Real Wood To Standard Laminates
 Stone Tiles To Ceramics

We also Supply & Fit Underfloor Heating
 Please Call For Help And Advice
 01793 791581 Mobile 07768448666

M J SMITH
PLASTERING
SERVICES
 CHURCH ROAD WANBOROUGH

- FRESHEN UP OLD WALLS AND CEILINGS FOR DECORATION
- RE-PLASTER DATED ARTEX AND CEILINGS.
- EXTERNAL RENDER AND FLOOR SCREEDING
- INSURANCE WORK UNDERTAKEN
- ALL WORKS GUARANTEED

25 years experience
01793 791042
07764 968525
 Marlonsmith@sky.com

Chimserv
 www.chimserv.com

Wood burning stove supply & installation
 Chimney lining & sweeping
 Fireplace design & build
 Cows, pots & birdguards



All types of building work &
 property maintenance undertaken

07860916790 or 01793 491011
 info@chimserv.com

PLUMBING & HEATING
FRANCIS ANDREW




Central Heating Installation & Repairs
 Boiler Installation & Repairs
 Landlord Certificates
 Bathroom & Kitchen Installations
 All domestic Plumbing

No call out charges
Free estimates
24hr service

Fully Qualified & Insured

Mob: 07720 245333
 Home: 01793 791542
 Email: faplumbing@hotmail.com



HERITAGE TREE CARE

Professional Tree Surgeons

**Comprehensive Service
Qualified Staff
Fully Insured**

- ✓ Pruning and Shaping
- ✓ Felling and Removal
- ✓ Hedge Cutting
- ✓ Stump Grinding
- ✓ Tree Planting

Free quotations and advice
Call Ian Walding (N.C.Hort / R.D. Arb)

01793 790210

email: ian@heritage-treecare.co.uk

www.heritage-treecare.co.uk



**Sugarcraft
and
Cake
Decorating
Supplies**

1 Hilliers Yard, Marlborough SN8 1BE
01672 288080

Write Learn Tutoring English Tuition

Heather Hawkins
Dip Classical Studies, BA, MA, MTA

- Enthusiastic, dedicated one to one English tuition
- KS1 - Undergraduate
- SEN welcome
- Individually planned lessons
- DBS enhanced checked
- Competitive rates

Tel: 07876763795 email: heatherhawkins@btinternet.com

ROB SPURR

Planning & Design Consultant

Architectural plans drawn for extensions,
conversions and internal remodelling.

I deal with all aspects of planning applications
and building regulations, Listed Buildings and
Conservation Area consents.

3D bathroom designs and specifications.

Rob Spurr trading as Sun Design & Consultancy Ltd

Southview, 22 Ham Road, Wanborough
Email: robspurr@btconnect.com
Tel: 01793 790381
Mob: 07786 933460

mark jerome painter & decorator

All types of interior and exterior decorating
using the latest in dust free technology

Transform your solid wood kitchen with paint
using the best hardwearing paint finishes
available

"Thanks for a fantastic job!"
Debbie Moxon, Baydon Post Office

01793 790307

High St, Wanborough



**Back &
Active
Care**

Matthew Brittain
Chiropractor

Visit: www.backandactivecare.co.uk

Email: Matthew@backandactivecare.co.uk

Call: 07480 762885

Emoyeni, Kite Hill, Wanborough, Swindon SN4 6DD

Rachel Payne
Professional Hair Salon

- * Cuts, Styling, Colouring
- * Olaplex, Moroccan Oil, Schwarzkopf
- * Self contained salon in Bishopstone
- * Fully Covid Secure

Tel: 07527 607947



Nicola Cook
Clinical & Medical
Hypnotherapist
Hypnobirthing Teacher

07578 591577

nicoladawn78@icloud.com

www.nicolacookhypnotherapy.com

Appointments available in Wanborough, Lechlade and online



tbicycles
Bike Service & Repair
07850 810714

Wanborough based, offering a free collection & delivery service within the Swindon area.

Cytech Level 2 qualified mechanic offering reliable & affordable servicing & repair.

Fully insured & guaranteed work including safety check.

Mobile: Tony 07850 810714

Email: tbicycles@icloud.com

Website: www.tbicycles.co.uk

Mobile Hairdresser

Working from home or mobile to yours

Introductory prices

Contact Denise on 07902865910

**WHY FEEL ANYTHING
LESS THAN 100%?**



I Can Help You

I work with clients to help them improve their health, re-balance, live a full and more vibrant life and stay healthy.

Please call to arrange a complimentary initial consultation.

Trudi Wagner
trudi@trudiswellnesshub.co.uk
07771 236 165

www.trudiswellnesshub.co.uk

HB'S BEAUTY

Hannah Thoburn
BEAUTICIAN

Call: 07789 005121

Hannah_thoburn@icloud.com
The Verne, The Marsh, Wanborough, SN4 0AR

Woodfix

Kitchens, bathrooms and carpentry

Quality Kitchens & Bathrooms
supplied and fitted

Bespoke Built-In Cupboards,
Shelving and Worktops

All types of Flooring,
Replacement Doors & Loft Ladders

01793 790752

woodfix@btinternet.com
www.woodfix.co.uk

A local family run business
20 years experience
Expert advice & design and
Project management
CALL US FOR A FREE QUOTE



James's Landscaping and Gardening Services

*Grass Cutting *Hedge Trimming
*Small Trees *Garden Maintenance
*Clearances

Hard Landscaping-
Various Including *Fencing
*Gates *Paths *Paving *Sheds

Locally based in Wanborough.
For quotations, bookings or
information- please telephone
James Robb 07863 599991

Barrett Accounting and Tax Services

Chartered Accountants

Chartered Tax Advisers



LIMITED COMPANIES,
UNINCORPORATED
BUSINESSES AND
INDIVIDUALS

ACCOUNTS
BOOK-KEEPING
TAX RETURNS
PAYE • PAYROLL
VAT • TAX ADVICE

If you want service that gives
value for money, whilst being
professional and efficient,
contact us on

01793 741250 or
mail@barrett-ats.co.uk

WINDOW L&C CLEANING LTD

Local, reliable, professional window
cleaners offering a monthly or
bi-monthly service.

Call **Lee** today for a **FREE** quotation.

07963 850009
01793 481878

Lsmart21@sky.com
www.landc-cleaning.co.uk

PC Doctor Dan

115 High Street, Cricklade
Tel: 01793 759192 Mob: 07890 377517

Home & Business Computing

- ✓ Free pick-up and drop-off service
- ✓ Purchasing advice, setup and installation
- ✓ Secure wireless and home networking
- ✓ Share files, photos, music and printers
- ✓ Virus and spyware detection and removal
- ✓ Training to meet your specific needs
- ✓ Hardware/ software repairs and upgrades
- ✓ Improve PC performance and reliability
- ✓ Create backups to protect key information
- ✓ Consultancy and managed service options

20 years IT experience @Intel Corporation

www.pcdactor-dan.co.uk

Well Hung Framing by Kate Herbert

From medals and memorabilia to paintings, prints and certificates – I stock a wide range of supplies to suit all budgets and also offer frame repairs and reglazing. Please call or email to arrange a visit to my studio in Watchfield to discuss your requirements, with no time pressure to make hurried decisions.

07710 348 263
bykateherbert@gmail.com
wellhungframing.co

Mature Local Carer / Companion

Available from a few hours a day to 24/7 live in care
Excellent current local references

I can provide:-

- Personal care
- Shopping
- Cooking meals
- Light housework
- Companionship

Please call in the first instance to discuss your individual needs

Carol on 07808 792602

DBS Registered

RABBIT HILL PROOFREADING

Maria Hawkins LLB

Society for Editors & Proofreaders Entry Level Member

Providing a professional finish to your document

- Work undertaken on any kind of document on paper or electronically
- Checking for all errors in grammar, spelling, layout and presentation

• Competitive rates

Tel: 07592 392214

Email: mariahawkins@btinternet.com

Maths Tuition GCSE & A Level

- Qualified Maths Teacher
- GCSE exam marker
- Over 20 years teaching experience
- 1:1 lessons
- Revision lessons
- Flexible hours
- Based in Wanborough

÷ ∞ Σ

∫ π √

≥ × +

Helen James BSc(Hons) PGCE MA
Email: helenmjames11@gmail.com Tel: 07776 309633
www.helenjamesmaths.co.uk

Online lessons also available

Nursery

For children from six weeks old

Pre-School

Indoor and outdoor learning for children 3 – 5 years old

- Inspirational Forest Schooling
- Funded places available
- Flexible hours
- Unprocessed freshly prepared food



www.alfrescochildcare.co.uk
enquiries@alfrescochildcare.co.uk
01793 790263

Ofsted
Good Provider



TAKE ONE
TAKE ONE

Video Photography Audio Cine

Video Transfers

VHS - Camera Tape / Cards - DVD

Cine Film Conversions

Standard/Super 8 - 16mm

Slide Negative Scanning

35mm - 120 format - slideshow creation

Audio Conversions

Cassette Tape - Open Reel - Mini Disc - CD

Event Filming - Creative Editing

Web Video Films - DVD Production

Providing professional services
in Wanborough since 1998

Tel: 01793 790842
ian@takeonestudio.co.uk

Visit our showroom at
14 Lotmead Business Village, Wanborough

CHRISTOPHER LAWRENCE DESIGNS

**Quality Craftsmanship &
Expert, Innovative Design**



We design, sell and install kitchens
manufactured in Great Britain and
have three innovative showrooms

*We also supply a wide range of small and
large appliances, cabinets, doors, handles,
lighting, plinths, worktops, taps, flooring,
radiators, splashbacks, pop-up and USB
sockets, as well as wet room and bathroom
fixtures and fittings. We sell direct and can
supply/deliver only or supply and install
any of the above products.*



Best of Houzz Awards 2018 & 2019 for
Highest Levels of Customer Satisfaction.
Read more reviews: <https://bit.ly/2srnlyO>

Office: 01793 790108 Mobile: 07930 699500
info@chrisltdesigns.co.uk www.chrisltdesigns.co.uk



Cat Care & Services

If you need help caring for your pet or are away from home and don't
want the stress of the cattery 'Cat Care & Services' will meet your and
your pet's needs

Our Visits will include:

- Lots of socialising, play
- Lap time and attention for your pet
- Swindon and surrounding areas
- £10 per visit, (visits are 1 hour)



Cat Care & Services



Helen Spring: 0777 0767 916

BAYDON MOWERS

Garden Machinery Specialists

- New Machines
- Servicing & Repairs
- Collection & Delivery for ride-ons
- Spare Parts
- Welding & Brewhing gases

Mon - Thurs 9am - 5.30pm

Fri 9am - 5pm

Saturday 9am - 1pm

Unit 1 Skylarks | Bytham Road
Ogbourne St George | Marlborough
Wiltshire SN8 1TD

**WE HAVE
MOVED!**

**01672
841207**

incentivised.com

**richard
james**

local agents with local knowledge

our people make the difference

"Living in Wanborough puts me in a unique position when it
comes to selling the benefits of the parish to any potential
buyers. I have worked in the local area for almost 20 years,
and specialise in the sale of village and country homes
across Wiltshire, Gloucestershire and Oxfordshire."




ross sutton
director

contact **Ross** today on
01793 814 542 or **07889 366 130**
ross@incentivised.com

hair by lana
HAIR STYLIST




07815424837
hairbylanab@gmail.com
Wanborough, SN40BJ



Become Healthier, Fitter,
Happier & Resilient
Ride the Wave of Life one
Workout at a Time

Personal Training
1-2-1 Sessions
Group PT for 3 to 5

Located in Wanborough
Full Outdoor Setup
Fun & Friendly
Health & Goal Focused

RIDERSTRONG
Ride the Wave

For more info
email - thomcorkett@riderstrong.co.uk
web - riderstrong.co.uk
instagram - [thomcorkett_riderstrong](https://www.instagram.com/thomcorkett_riderstrong)

St. Andrew's Church Wanborough

The Church is currently offering limited services, we will resume printing cleaning details and Sidespersons' roster etc when normal patterns resume.



*There are Books of Remembrance in All Saints', Liddington and St. Andrew's, Wanborough.
If anyone wishes to have a name recorded there, please contact a Churchwarden.*

Phoenix Enterprises

Since 2002, Phoenix Enterprises has worked with vulnerable adults in Swindon, who are often overlooked in terms of opportunities. Our mission is to work with adults experiencing short or long-term mental health problems, these range from depression to autism, and also people with learning difficulties, physical disabilities and people who are struggling to return to work. We act as a stepping-stone towards jobs in competitive employment by giving people the opportunity to rebuild their confidence whilst learning new skills in a productive and supportive environment. At Phoenix we aim to give all our service users the best chance of finding meaningful employment as well as supporting them in reaching their full potentials. This not only gives members of the community confidence, but also enables them to live an independent life. Alongside preparation for employment, Phoenix also assists its service users with all benefit applications/assessments/appeals, housing and rent queries, offers support across various appointments such as medical/hospital/job centre, personal skills development, work experience and traineeships/gaining qualifications.

Phoenix not only offers support and work experience for our service users, but also provides a much-needed social space for them. Phoenix is therefore more than a support service, it's a place where our service users can make and maintain friendships. Phoenix allows our service users to have social interactions without pressure and at their own pace in a safe environment. We offer a variety of social events throughout the year too, from our monthly social events to days out.

<http://www.phoenixenterprises.co.uk>

The Joke Box

A little light humour to cheer you up

- ◆ Where do you folks stand on procrastination? I'm 'Pro', but we can discuss in more depth later.
- ◆ I ordered 4 Kindles from Amazon, but they sent me a Two Ronnies DVD!
- ◆ My partner complains that I don't say phrases correctly, well aren't they a little ray of sun screen!
- ◆ My partner also complains that I didn't pay enough attention at school, it seems I bought the wrong children home last week.
- ◆ Tonight we are having Himalayan rabbit stew for dinner. We found Himalayan in the road earlier!

Keep smiling all!
The Village Joker



Copy date for the Lyden is 14th of the month prior to publication
Please send your articles to e-mail Lydenmagazine@gmail.com

Privacy Statement

1.The Lyden Magazine needs to keep a small amount of personal data about its subscribers to enable the correct delivery and renewal of subscriptions. 2.We will collect, store, use, amend, share, destroy or delete personal data only in ways which protect people's privacy and comply with the General Data Protection Regulation (GDPR) and other relevant legislation. 3. We will only collect the following information: Name and Address for delivery 4. We will provide individuals with details of the data we have about them or amend or delete when requested by the relevant individual. 4 We will keep all personal data secure. 5.We will not share any personal data with third parties or individuals outside of the Lyden distribution team.

CONTACT DETAILS FOR LOCAL ORGANISATIONS

BENEFICE

Revd Sandy Railton 01793 814162/07867 525641

sandyrailton@icloud.com

or Revd Phil Ashby 01793 978528/07087 789649

revphilashby@gmail.com

Churchwardens for Wanborough & Liddington

Sarah Sumner 01793 790814/07894477874

sarahsumner@gmail.com

Gill Brown 01793 480959/07771600162

Captain of Wanborough and Liddington Bellringers

Tony Pullan T :790904

Practice 1st, 3rd and 5th Fridays Wanborough, 2nd and 4th Fridays Liddington

Liddington 100 Club

Caroline Tams T: 07876 714950 E: ctams1@icloud.com

St Andrew's Flower Club

Chair: Kay Cullimore Tel 790458

Treasurer: Jackie Midwinter Tel 950852

Secretary: Alison Carse 790858

WANBOROUGH PARISH COUNCIL

Chairman: Bob Biggs, Wanborough Herb Nursery, Tel: 01793 790327

E: clrbiggs@wanborough.info

Clerk: Angela Raymond, Tel: 07588 769829

E: clerk@wanborough.info

LIDDINGTON PARISH COUNCIL

Chairman: David Lomax, 38 Purley Road, Liddington. Telephone 01793 790440 / 07931 895044

Clerk: Laura Evans, 2 Red Row Cottages, Idsonte, Ashhbury

E: parishclerk@liddington.org

BOROUGH COUNCILLOR

Gary Sumner, Blenheim, Kite Hill, Wanborough, SN4 0AW

T:790814 E:gary@ridgewayvillages.co.uk

WANBOROUGH PRIMARY SCHOOL

Headteacher: Andrew Drury, Tel: 790269

Clerk to the Governing Body: Lana Tilley Tel: 790269

PTA : Chair: Guy Simmonds c/o Wanborough Primary School,

E: contactpta@wanboroughprimary.org

www.wanboroughprimary.org

BEAVERS/CUBS/SCOUTS

Group Scout Leader: Tessa Lanstein, Tel: 07795 057420

(Waiting lists are in operation so please make early contact)

Boys and Girls aged 6-8 / 8-10½ / 10½ -14 meet weekly in term time.

WANBOROUGH VETS CYCLING

Secretary: David Halfhead, Tel: 790852

WANBOROUGH JUNIOR FOOTBALL CLUB (The Wasps)

Secretary: Matthew Strickland T: 07754 978487

E:secretary@wanboroughwasps.com

Details of Team Managers U7(Year2) to U18(Year 13) at

www.wanboroughwasps.com

WANBOROUGH HANDBELL RINGERS

Nicky Pullan, 2, The Beanlands, Wanborough. Tel: 790904

WANBOROUGH SHOW SOCIETY

Chair: John Basevi M:07843 510 328

Show Secretary: Mike Thompson M: 07768 558799

info@wanboroughshow.org

WANBOROUGH CRICKET CLUB

Hon. Sec. : Andy Thompson, Tel: 01793 852623

WANBOROUGH TENNIS CLUB

Hon. Sec. Melanie Brough 741277 melaniebrough2@gmail.com

Membership Sec. Anica Alvarez Nishio -

wanboroughmembers@gmail.com

WANBOROUGH BOWLS CLUB

Hon Sec. Mags Sanders Tel. 01793 614861

info@wanboroughbowlsclub.org.uk

WANBOROUGH BEER FESTIVAL/THE OLD BOILERS

Secretary: Barry Hillier 07443 490019

wanboroughbeerfestival@gmail.com/theoldboilers@gmail.com

WANBOROUGH VILLAGE HALL

Lettings Secretary: Karen Hawkins 07823 490153

E:vwlettings@gmail.com Hall calendar on Wanborough.info

Chairperson: Dion Dean 07841 866773

Secretary: Sarah Ingram 07530 451549

WANBOROUGH PLAYGROUP (Village pre-School)

Supervisor: Sarah Ingram, Tel: 07444 352687 (during Playgroup hours)

Chair of the Committee: Kayleigh Bizley 07818 432657

wanboroughplaygroup.org.uk

wanboroughplaygroup@hotmail.co.uk

WANBOROUGH THEATRE CLUB

Hon. Sec.: Mrs. D. Rawlings, Tel: 01793 979170

BISHOPSTONE AND HINTON PARVA WI

Secretary: Sue Reade. Tel: 710208

E: sue_reade@btinternet.com

BRIDGE CLUB

Jim & Joy Ball, Tel: 790293. (Friday evenings at Hinton Parva Village Hall)

LIDDINGTON SCOTTISH DANCING GROUP

Linda Clarke. Tel: 790158

Thursday evenings 7.45 – 10pm (September – May at Liddington Village Hall)

LIDDINGTON VILLAGE HALL

Hon. Sec.: Alison Babbington, 10 The Street, Liddington SN4 0HD

Chairman: Mr. Matthew Bowman, Meadowbank House, Medbourne

Lane, Liddington SN4 0EY Tel: 791401

matthewbowman56@gmail.com

Hon. Lettings Sec.: Sarah Hill, Church Rd, Liddington Tel: 790104.

sarah@jonhill.co.uk

LOCAL WEBSITES:

For further information and news from our four villages, visit: www.liddington.org or www.wanborough.info

For Bishopstone and Hinton Parva visit www.villagenewsletter.org

LYDEN MAGAZINE CONTACTS

Editorial: lydenmagazine@gmail.com

Advertising: Lorna Naseem Tel: 07903 210505

lydenadvertising@gmail.com

Subscriptions/

distribution: lydensubs@gmail.com

Announcements: lydenannounce@gmail.com



Flourish
HAIRDRESSING BY MICHELLE
Mobile Hairdresser - Warborough and surrounding areas
07834229827



BGG
GARDEN AND TREE CARE LTD
01367 241 329 07802 701 620
ben@bgggardenandtreecare.co.uk
Fairview Cottage, Harehills Farm, Easingdon, Oxfordshire, SN2 9PH
Offering the complete Gardening and Tree Care service

- Commercial Mowing
- Grass and Hedge Cutting
- Tree Surgery and Planting
- Tree Shearing
- Biomass Chipping
- Firewood and Woodchip



Snail Pace Furniture
Careful Restoration & Patient Tuition
Based in Chiseldon
All aspects of furniture renovation undertaken

- Upholstery
- Willow work
- Repairs & alterations
- Re-caning
- Furniture painting
- Courses and workshops

Contact Abi to discuss your requirements; Phone: 07760 665830
Email: snailpacefurniture@gmail.com
www.facebook.com/snailpacelearning
www.snailpacefurniture.co.uk

CAMTEC INSTALLATIONS
24 HR EMERGENCY ELECTRICIANS IN SWINDON
ELECTRICAL SERVICES
CONTACT US:
01793 495969 All work Guaranteed
www.camtecinstallations.com
Email: info@camtecinstallations.com

CLEAN-CUT window and external cleaning services
we also clean!
conservatories & roof
guttering & fascia
garage doors
patios etc
maintenance work undertaken
guttering/fascia etc
EST 2008



don't delay
25% off first clean
call ROY for a FREE no obligation quote today on
07725009070
www.clean-cut.co.uk
email: clean-cut1@hotmail.com



Chappells
estate agents
Est. 1986
Specialists in village property
for over 30 years.
Contact us now for your
free valuation.
01793 618080
sales@chappells.uk.com
lettings@chappells.uk.com

DESIGN
BUILD
INTERIORS

CONTACT US FOR A FREE CONSULTATION
www.no471.com
hello@no471.com
07709 899 832

No.471

PAUL BISHOP

Interior and Exterior Painter and Decorator
Free Estimates
Competitive prices

1 Manor View, Liddington
Call Paul on 790768 / mobile 07770 751275

Chappells 
ESTATE AGENTS

Your Village specialist when it comes to selling or renting. Free valuations and market advice.

01793 618080

colin@chappells.uk.com/phil@chappells.com
www.chappells.uk.com

JUDI MOORE

YOUR WANBOROUGH BASED
TRAVEL AGENT

FULLY ABTA & ATOL REGISTERED

Call 01793 791238 or email me

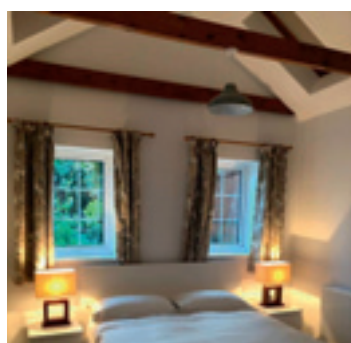
judi.moore@thepersonaltravelagents.co.uk



richard
james

contact Ross today on
t 01793 814 542
m 07889 366 130
ross@incentivised.com

incentivised.com
motivated to move you

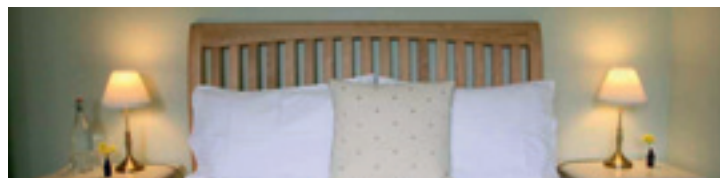


The Old Post Office

Beautifully converted
one bed accommodation.

Available for
short term rent.

Wanborough, Wiltshire
07903 210505



Meadowbank House

Traditional Bed and Breakfast

Restful and luxurious accommodation in Liddington

01793 791401 www.meadowbankhouse.com

A & B Domestic Appliances

Guaranteed repairs to washing machines and tumble driers. A genuine professional repair service.

Contact Andrew Matthews at:

E: aandbdomestic@gmail.com

Tel: 01793 536332 Mobile: 07850 665925

11 Farman Close, Eldene, Swindon, SN3 6DP

The HAIR and TRICHOLOGY Clinic

Treatment of Hair and Scalp Conditions
NHS & Private Wig Service 01793 741136

Cameo Hair Salon Ltd

Private hairdressing rooms available, full PPE

7 High Street, Chiseldon SN4 0NQ

01793 740147

www.hairandtrichology.co.uk



Mowerfixer

maintenance/repair service mowers,
hedgecutters trimmers etc. for the Ridgeway villages
New & 2nd hand garden machinery for sale
Doug Stevens
0789 979 1833 doug@mowerfixer.co.uk

walkies!

of Wanborough



Local Dog Walking
and Pop-in Pet Care
Service for when you
can't be there...

Local Ladies based
in Wanborough
Insured
First Aid Trained
DBS checked
with great Wellies!!



Contact: 07501 197793 Email: WalkiesofWanborough@gmail.com